

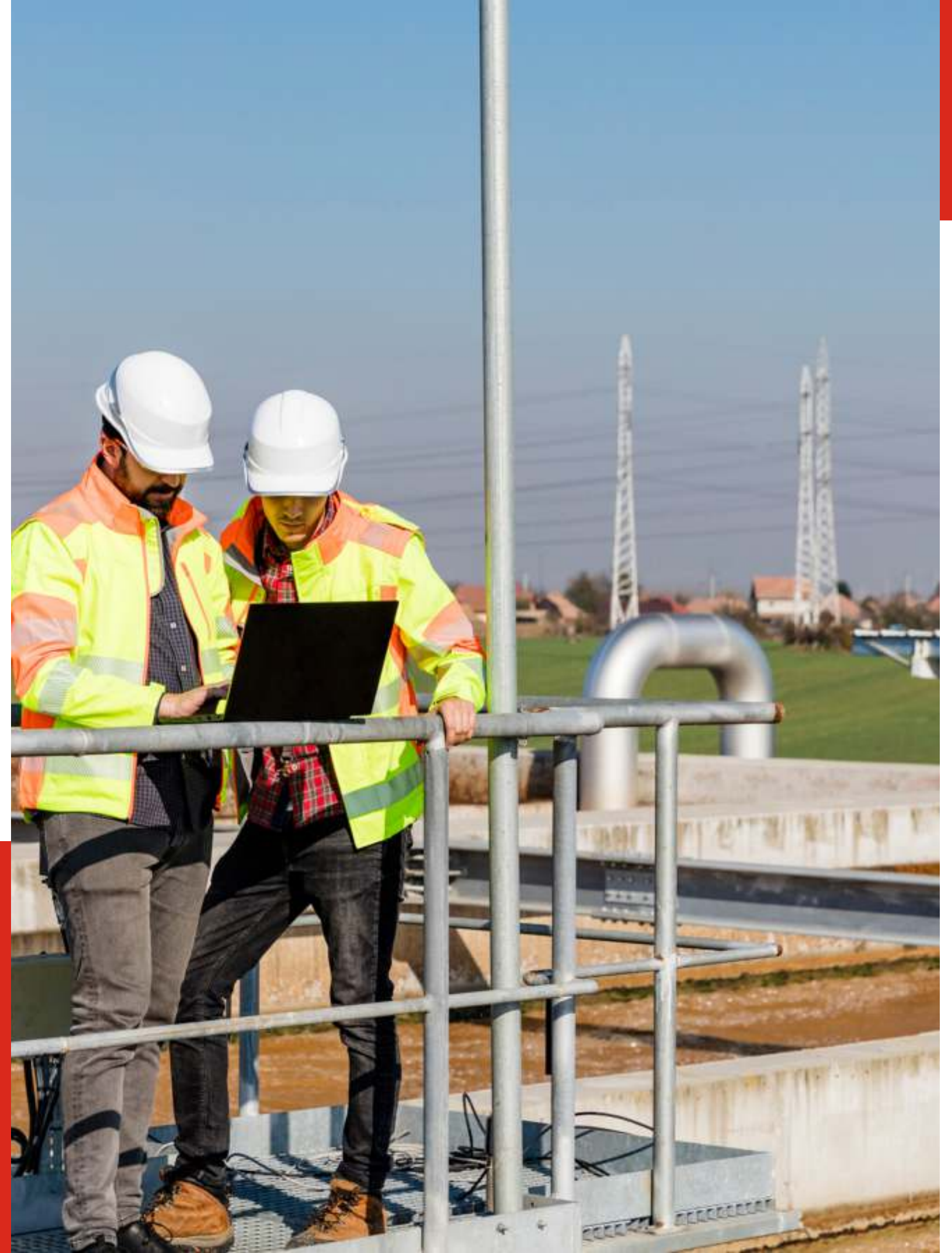


Water and Sanitary Engineering

Statement of Qualifications



Engineering excellence
since 1984



DIGITAL TWIN SOLUTIONS

Overview

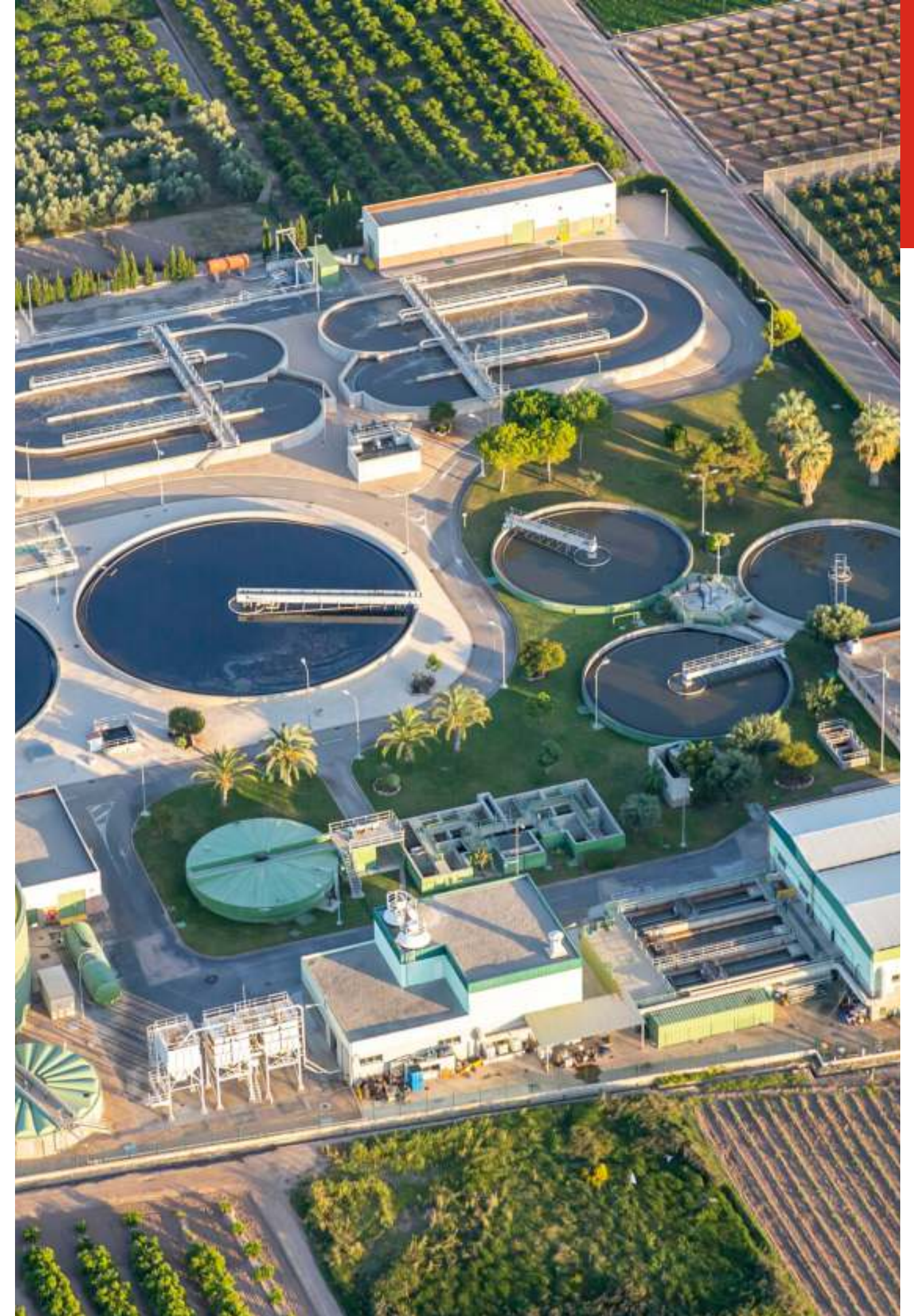
CCI Engineering Services has been offering a broad range of engineering and technical services in Columbus since 1984. Our staff of 25 employees provide civil engineering planning and design, construction administration and construction inspection (CACI).

CCI has a long history of successful projects with City of Columbus, Cleveland and Akron, Franklin County, ODOT and other Ohio counties, municipalities and public agencies.

Recent projects include Franklin County Little Farms Water Main Replacement Design and CACI, City of Columbus Brooklyn Cleveland Avenue HSTS, and numerous sanitary sewer projects including Clintonville-Schreyer, Linden, Sunrise-Glenn, Miller-Kelton/Newton-Bedford and Yale-Edwin.

CCI has grown from a small female-owned engineering support services company into a full service engineering firm. Our assigned project managers, Roger Jacobsen for Design and Darryl Waterbury for CACI, have extensive Ohio experience allowing them to accept the most challenging assignments and deadline-driven projects, while maintaining a keen focus on quality assurance, budget, and sound technical solutions.

CCI is a State of Ohio DBE, SBE and EDGE certified firm. CCI is also a 100% women owned business and certified as a City of Columbus FBE, City of Cleveland FBE, City of Akron WBE and federally as a WOSB.





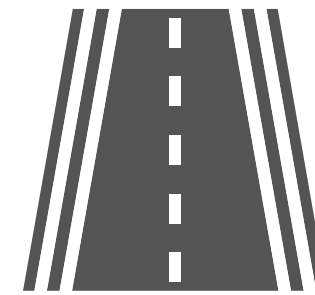
Industries we serve



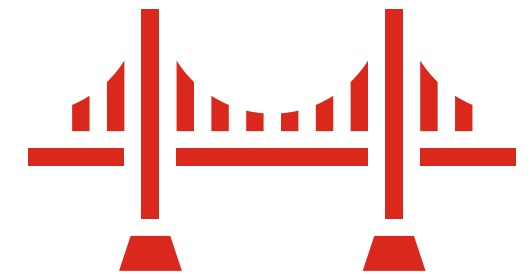
AVIATION



BUILDINGS



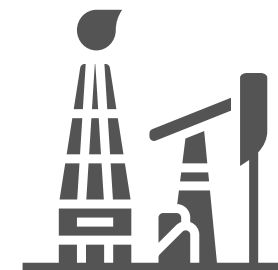
HIGHWAYS



INFRASTRUCTURE



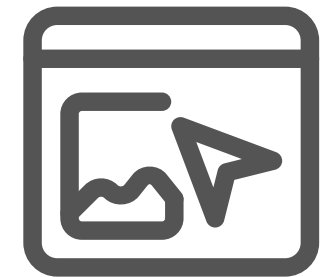
MANUFACTURING



OIL & GAS



RAIL



LAND DEVELOPMENT

Profile of some of our key services

Civil Engineering

- Water Line and Sanitary Design
- Pavement Evaluation and Design
- Utility Relocation Design
- Environmental and Regulatory Permitting
- Maintenance of Traffic (MOT) Plans
- Stormwater Management
- Engineering Cost Estimates
- Constructability Reviews
- Electrical Engineering Design for Facilities
- Site Civil Engineering for Facilities
- Project Management

Construction Administration

- Owner Authorized Representative (OAR)
- Quality Control
- Work Schedule Control
- Change order/RFI Control
- Pay App Review and Approval
- Public Relations and Outreach
- Bidding and Evaluation
- Constructability Reviews
- Contractor Management
- Permitting
- Inspection and Reporting



Roger Jacobsen PE (Ohio PE-55589)

BS Civil Engineering, The Ohio State University
36 Total Years of Experience
36 Years with water design and construction projects.
31 Years Practicing as a P.E.
4 Years with CCI

Key Staff : Roger Jacobsen

Roger Jacobsen, PE has lived and worked in the Columbus area for his entire 32-year career. He is a leader in the civil engineering field with a proven ability to successfully develop, organize, and lead diverse groups of professionals on civil engineering and public infrastructure projects.

He has technical experience in most facets of the civil engineering field ranging from conceptual planning through construction and commissioning.

His special focus and expertise is in urban linear infrastructure and utilities projects ranging from system studies and monitoring to complex urban construction techniques. Although he is often very involved in project management, direction and client interaction, he also strives to spend as much time in the field as possible working directly with designers and constructors.

Roger has extensive experience working with citizens, neighborhood groups, utility companies and various City and County Departments. Key components included monthly Area Commission presentations, town hall style public input meetings, and project publications. The programs employed a project hot line for concerned citizens to request specific assistance.

More recently Roger has presented projects at numerous Area Commission public meetings including Clintonville, University District, Victorian Village and the Downtown Area.

He routinely coordinates with multiple City Departments. This includes DPS when projects involve pavement restoration, inspections, ROW improvements or Maintenance of Traffic Plans; DOW for design coordination and WSP preparation; DOP for electric service designs; and BZS for private development projects. He also presents at Columbus BZA public hearings.



DARYL WATERBURY, CM

BS Criminology and Psychology
36 Total Years of Experience
36 Years with water design and
construction
projects.

NICET Level II Certified
ACI Concrete Field testing
Grade 1
3 Years with CCI

Key Staff : Darryl Waterbury

Darryl Waterbury is an experienced project manager with an extensive record of successfully directing top quality, large-scale construction initiatives, including multimilliondollar state and municipal road and sewer improvements. Darryl has a reputation for effectively collaborating with contractors, clients and municipal officials to consistently meet key deliverables and milestones, resulting in positive client feedback and annual contract renewals.

Darryl's certifications include NICET Level II, ACI Concrete Field testing Technical – Grade 1, ODOT Flexible Pavements, and OAIMA Level 1 Aggregate Tech. Darryl served on the Little Farms design project as constructability reviewer and engineer, and is currently Construction Manager during the project's ongoing construction phase.



Sample Projects



FRANKLIN COUNTY LITTLE FARMS WATER MAIN REPLACEMENT

Design Phase – CCI provided design, engineering cost estimates and bid plans for the construction of 30,600 linear feet of new water lines in the Little Farms neighborhood in southwest Franklin County, Ohio. Design included pavement, curb, sidewalk and driveway replacement plans, maintenance of traffic (MOT), SWPP, and construction sequencing optimization to minimize traffic disruption.

Construction Phase – After completion of the design phase, CCI was awarded construction management for this project. Work began with the design and development of engineering cost estimates and bid plans; CCI is currently managing construction administration and construction inspection (CA/CI) on the final phase of this project.

Services provided included:

- Field investigations
- Hydraulic and Hydrological Analysis
- Preliminary and Final Design Report
- Alternatives Analysis and Engineering Cost Estimates
- Right of Way and Easements
- Stormwater Pollution Prevention Plans (SWPPP)
- Maintenance of Traffic Plans (MOT)
- Permitting
- Draft and Final Construction Plans and Specifications
- Bid Documents
- Construction Administration
- Construction Inspection



CITY OF COLUMBUS BROOKLYN/CLEVELAND AVENUE HSTS

Services provided included:

- Field investigations
- Hydraulic and Hydrological Analysis
- Preliminary and Final Design Report
- Alternatives Analysis and Engineering Cost Estimates
- Right of Way and Easements
- Permitting
- Draft and Final Construction Plans and Specifications
- Bid Documents
- Record Plans

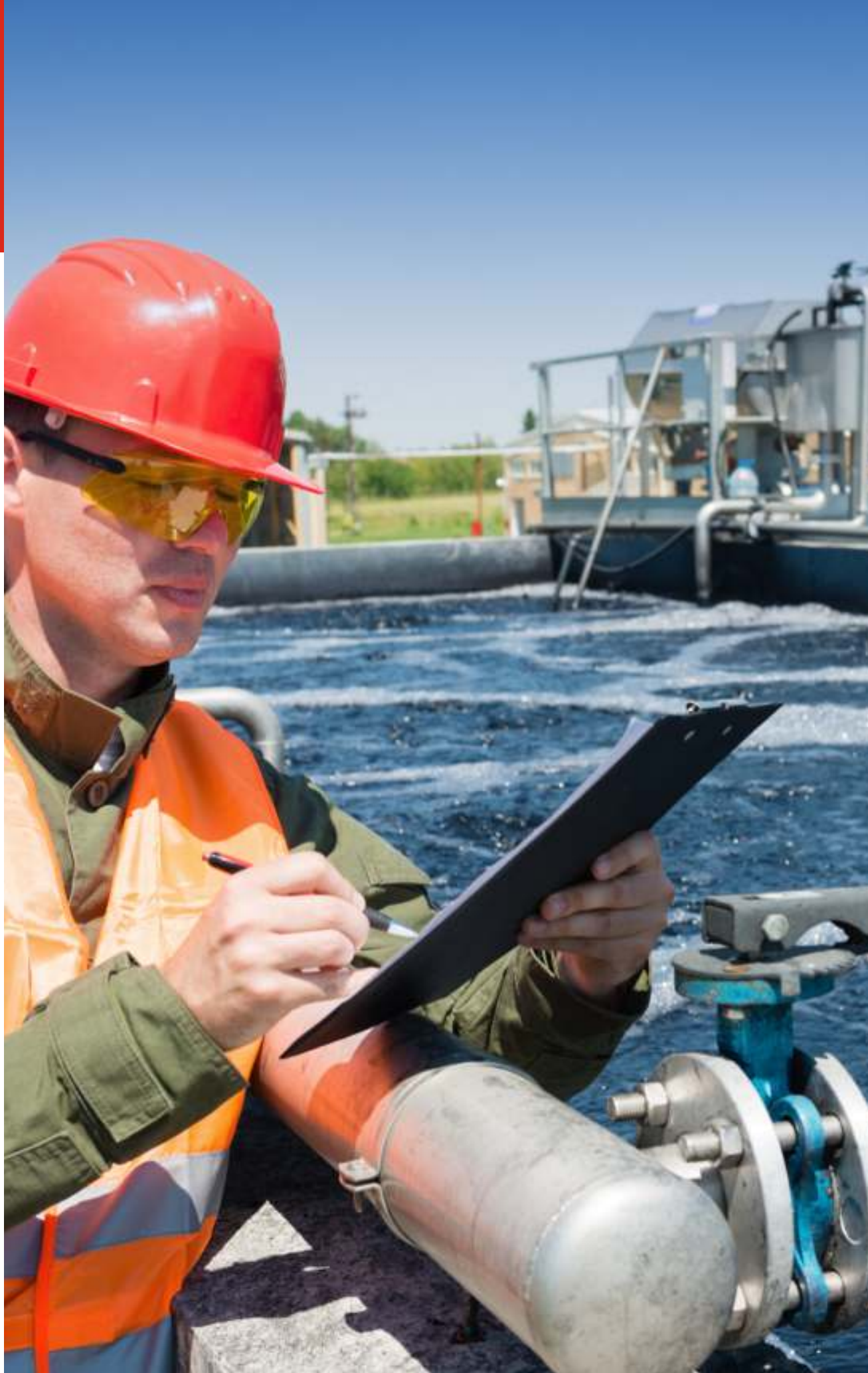
Performed field investigation, hydrologic & hydraulic analysis, and design & construction plan development for a Home Sewage Treatment Systems (HSTS) elimination project in the Brooklyn/Cleveland Avenues project area which is comprised of 22 homes along Brooklyn Avenue and seven businesses along Cleveland Avenue.

The design includes approximately 1,900 linear feet of sanitary sewer main extension and the installation of 29 sanitary sewer laterals.



CITY OF CHARDON OH, EASTSIDE SANITARY SEWER IMPROVEMENT

Installed one mile of 48" sanitary sewer through residential neighborhoods connecting to the City's wastewater treatment plant. This entailed field design for improvement of affected streets by replacing flexible pavements, concrete curbs and drive aprons. Also reconfigured pavement grades to improve drainage to existing storm structures.



SANITARY DISTRICT 4 WATER VALVE REPLACEMENT PROGRAM, FRANKLIN COUNTY, OHIO

As subconsultant to Prime AE Group, CCI's Roger Jacobsen provided key project engineering support tasks including field inspection and locating analysis, system configuration diagrams, specification writing, and construction cost estimating. The program included an evaluation of approximately 800 mainline water valves and hydrants in the District.

This project was completed under tight timeframes as required by Ohio EPA Findings and Orders, and encompassed more than 300 valve replacements, additions, and new hydrants. In addition to project engineering and technical support, also provided comprehensive procedures and framework for the required Unidirectional Flushing Program.

Work with us

Website

www.ccitechs.com

Email

info@ccitechs.com

Contact number

(614) 485-0670

2323 W. 5th Ave Suite 220
Columbus, OH 43204



LinkedIn

[@cci-engineering-services](#)



Twitter

[@CCIengservices](#)



Facebook

[@CCIengservices](#)



CCI ENGINEERING SERVICES