

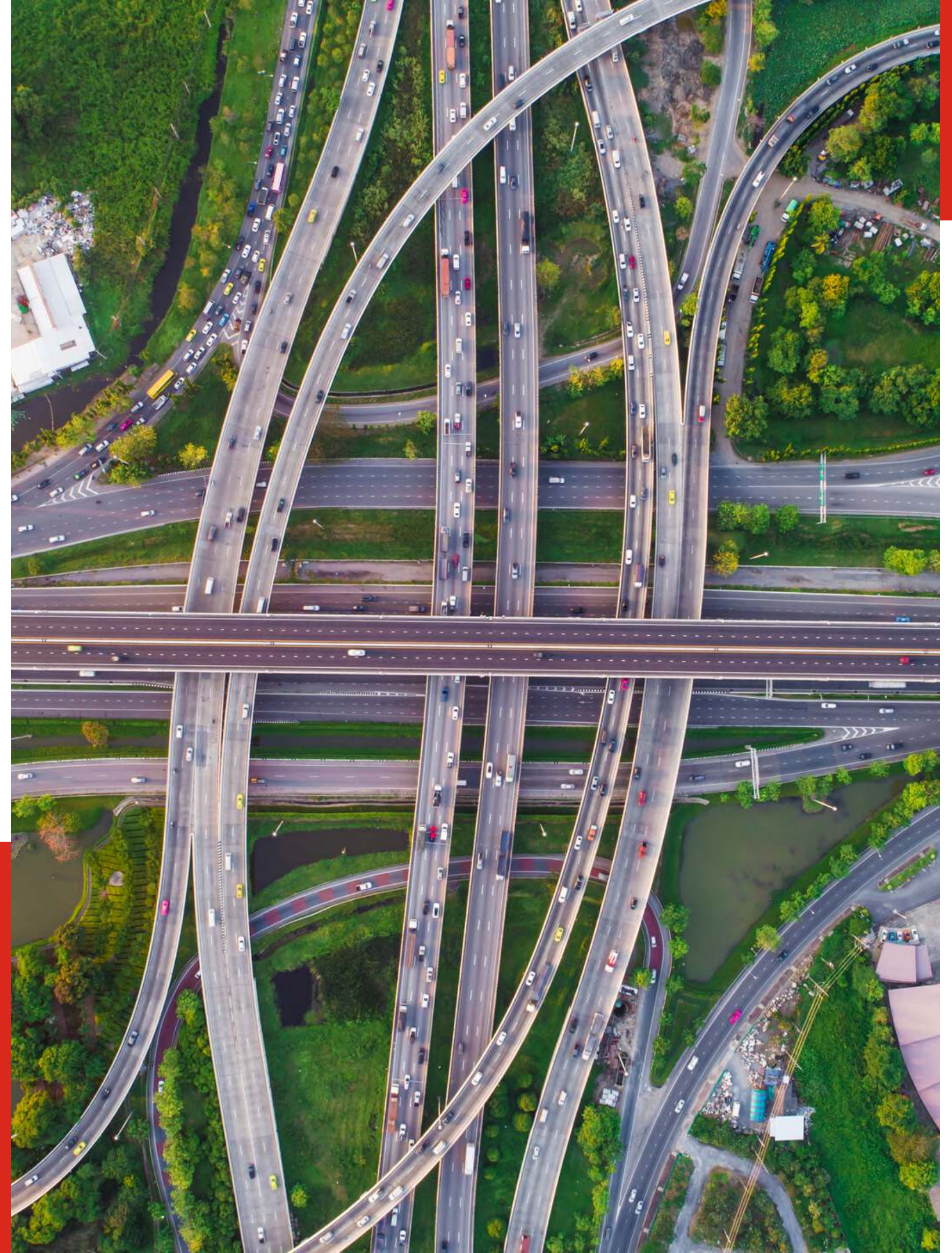


**CCI
ENGINEERING
SERVICES**

Transportation Services



Engineering excellence
since 1984

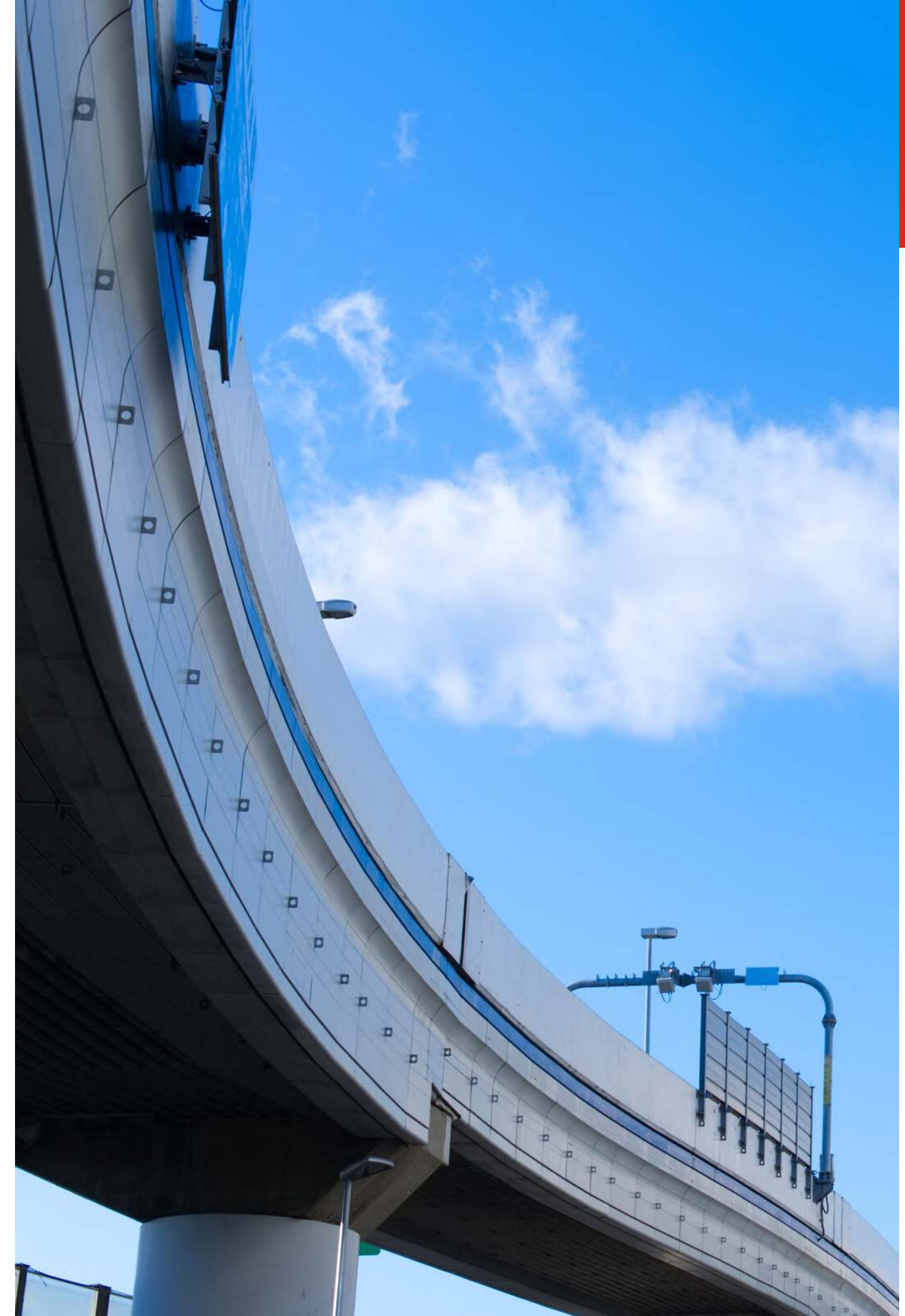


Overview

CCI Engineering Services has been offering consulting services for over 30 years, and has extensive experience in the Transportation industry. We have over 30 employees who can apply their expertise to a variety of transportation projects including intersection design, traffic studies and drainage design.

Our philosophy begins with providing unmatched client service and extends to meeting all budget and schedule objectives of your project.

We have established a reputation for easy collaboration and building lasting relationships. Nine out of ten clients return to CCI Engineering Services because of our focus on meeting and exceeding their needs and expectations. We are recognized for competence, integrity, and adding value through innovation.



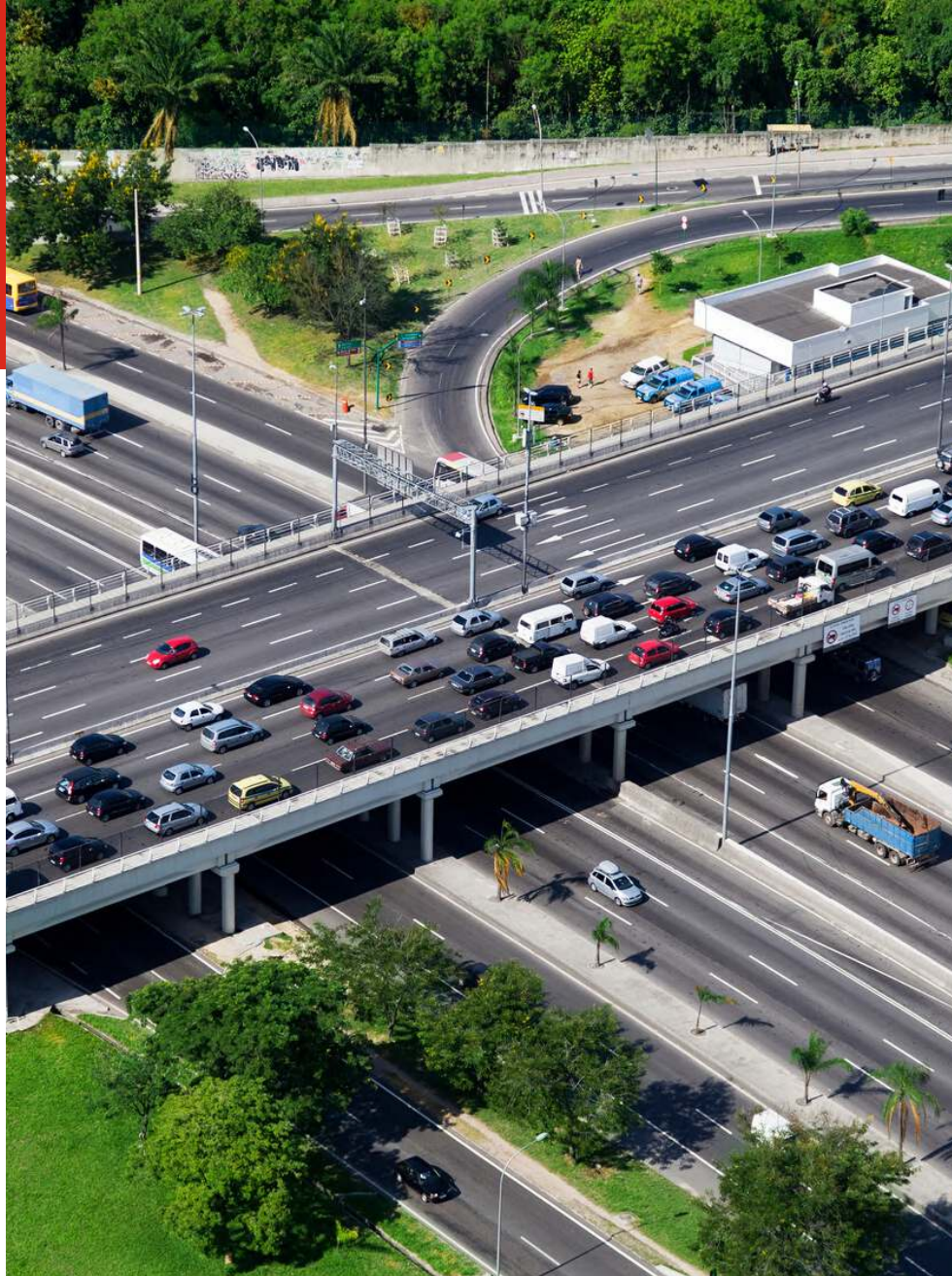


SERVICES FOR TRANSPORTATION PROJECTS INCLUDE:

- Roadway & Parking Lot Design
- Site-Civil Design
- Plan & Profile Drawings
- Stormwater Drainage Design
- Stormwater Pollution Prevention Plans (SWPPP)
- Maintenance of Traffic Plans (MOT)
- Pavement Marking
- Bicycle Pathways
- Noise Studies
- Utility Coordination
- Safety & Right of Way Plans
- ODOT Specifications
- 2D/3D CADD Production Support
- BIM Modeling & Coordination
- GIS Analysis & Mapping
- UAS Site Monitoring & Analysis
- Survey-grade Topographic Mapping via UAS & HDS Laser Scanning
- Inspection Photogrammetry & Point Clouds
- Construction Administration & Inspection (CACI)



Sample Projects



Canal Fulton, Cherry Street Intersection, MOT and Intersection Geometrics

Project consisted of improvements to the Cherry Street (SR 93) and Locust Street (CR 228) intersection. Improvements included widening and resurfacing 750 feet of Cherry Street (SR 93) and 700 feet of Locust Street (CR 228) for intersection geometric improvements, improved turn lane storage capacity, and improved truck movement.

The project also includes traffic signal improvements, improved pedestrian access, significant storm sewer reconstruction, and approximately 850 feet 12" water main reconstruction.

ODOT Portsmouth Bypass (SR 823)

CCI provided SWPPP design plans and calculations for mass grading operations, as well as detailed design SWPPP measures for approximately 9.7 miles and 460 acres of the new highway construction. Also performed 14 months monthly on-site inspection and reporting of erosion and sedimentation control measures.

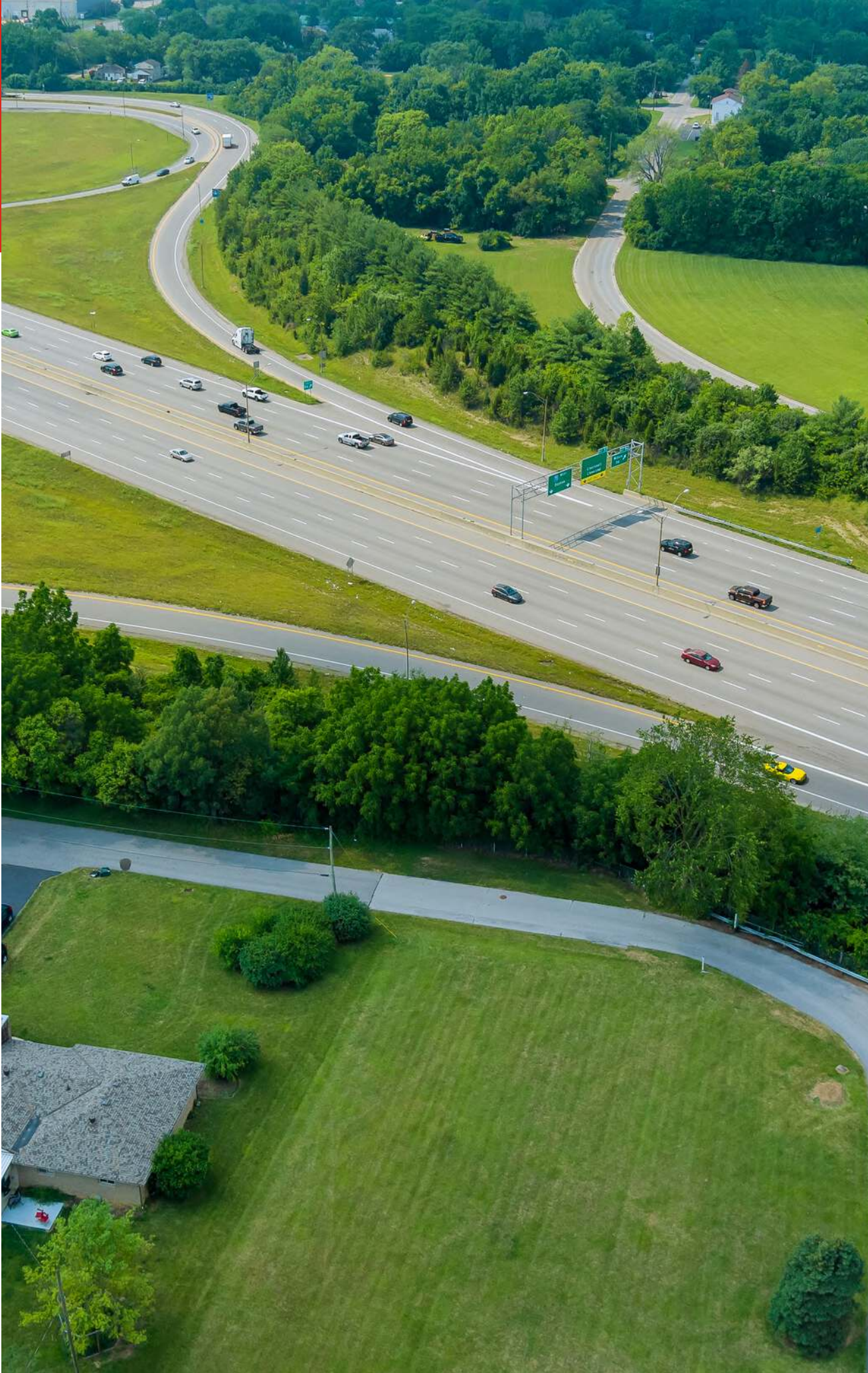


Cleveland, Opportunity Corridor Phase 3 (OC3) Water Distribution and Supply Design:

Performed Utility Design for approximately 9000 feet of Water Main, which included Distribution Mains and a Bridge Mounted 30” Transmission Main. Work also required to design of a 725 feet temporary bypass and Bridge Mounted 16” Sanitary (Sludge) Force Main. Work required close coordination with other Buildable Units. Design and construction ongoing.

National Pike Little Farms, Water Main Replacement Design and CACI:

Design and development of engineering cost estimates and bid plans for the construction of 30,600 LF of new water lines in the Little Farms housing area in southwest Franklin County. Design included pavement, curb, sidewalk and driveway replacement plans, MOT, SWPPP and construction sequencing optimization to minimize traffic disruption.



ODOT FRA-270-17.28 Far East Freeway Design, Columbus:

The first construction project resulting from The Far East Freeway Design Study, includes re-configuring IR-70 to IR-270 and IR-70 to Brice Rd interchanges, and includes all associated drainage, lighting, traffic control, utility relocation, and noise abatement. Performed roadway design for frontage road and utility design for 2,400 ft of water main relocation, which included trenchless crossing of IR-70 of both water main and sanitary sewer. Also served as project utility coordinator.



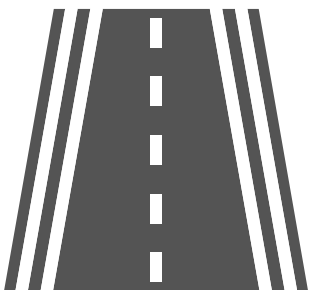
Industries we serve



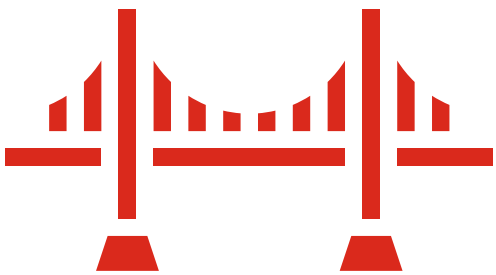
AVIATION



BUILDINGS



HIGHWAYS



INFRASTRUCTURE



MANUFACTURING



OIL & GAS



RAIL



LAND DEVELOPMENT

About us



CCI
ENGINEERING
SERVICES

CCI Engineering Services has been offering a broad range of engineering and technical services in Columbus since 1984. Our staff of 25 employees provide civil engineering planning and design, construction administration and construction inspection (CACI).

CCI has a long history of successful projects with City of Columbus, Cleveland and Akron, Franklin County, ODOT and other Ohio counties, municipalities and public agencies.

Recent projects include Franklin County Little Farms Water Main Replacement Design and CACI, City of Columbus Brooklyn Cleveland Avenue HSTS, and numerous sanitary sewer projects including Clintonville-Schreyer, Linden, Sunrise-Glenn, Miller-Kelton/Newton-Bedford and Yale-Edwin.

CCI has grown from a small female-owned engineering support services company into a full service engineering firm. Our assigned project managers, Roger Jacobsen for Design and Darryl Waterbury for CACI, have extensive Ohio experience allowing them to accept the most challenging assignments and deadline-driven projects, while maintaining a keen focus on quality assurance, budget, and sound technical solutions.

CCI is a State of Ohio DBE, SBE and EDGE certified firm. CCI is also a 100% women owned business and certified as a City of Columbus FBE, City of Cleveland FBE, City of Akron WBE and federally as a WOSB.



Work with us

Website

www.ccitechs.com

Email

info@ccitechs.com

Contact number

(614) 485-0670

2323 W. 5th Ave Suite 220
Columbus, OH 43204



LinkedIn

[@cci-engineering-services](#)



Twitter

[@CCIengservices](#)



Facebook

[@CCIengservices](#)

